

gToolBag Users Manual

v1.00

Micro-g Solutions Inc.

Erie, Colorado, USA

February 2002

Table of Contents

Table of Contents	1
Introduction	2
System Requirements	2
Installing gToolBag	2
<i>gToolBar</i>	3
<i>How gToolBar works</i>	3
<i>Running gProjectMerge</i>	3
<i>Running gProjectCopy</i>	4
<i>Running gToASCII</i>	4
License Information	4
<i>Support</i>	4
<i>Maintenance</i>	4

Introduction

This manual explains the operation of Micro-g Solutions’ (MGS) **gToolBag** Software version 1.0. **gToolBag** is a set of useful tools for users of the “g” software package. **gToolBag** currently consists of three programs which allow users to copy “g” project files, merge multiple “g” project files together, and dump “g” project data to an easy to read ASCII text file.

System Requirements

gToolBag runs best with the following minimal standards:

Operating System:	Windows 98 or Windows 2000
Free Hard Drive Space:	2MB or greater
RAM:	64MB or greater
Processor:	Intel™ P2 or greater
Processing Speed:	200MHz

Installing gToolBag

gToolBag is available for free for all users with a valid license for “g”. **gToolBag** is distributed as one file (setup.exe). This setup file will install all components of **gToolBag** as well as two samples files, and this help file (gToolBagHelp.doc).

To install **gToolBag** just follow these steps.

- Double click the Install application. Follow the instructions. It is highly recommended that you accept ALL installation paths.
- From the start menu **gToolBag** will be located in the Micro-g Solutions Inc\gToolBag\ directory.
- The user can now click on which application he or she would like to run.

gToolBar

How gToolBar works

gToolBag allows users the ability to modify “g” files that were not available before now.

gToolBag consists of three programs, ***gProjectMerge***, ***gProjectCopy***, and ***gToASCII***.

gProjectMerge is for combining many projects from the same location together. This is often useful for when a user doesn’t finish taking data all at once, but wants to process it all together.

gProjectCopy is mainly used for renaming a project. Before this was not possible because “g” uses the set file names internally therefore if you were to change the name of the files, your project would no longer be able to find them. ***gToASCII*** is for exporting all project data to an easy to understand text file. This

is useful for users that are using a software package other than “g”, who want to import “g” data to their software.

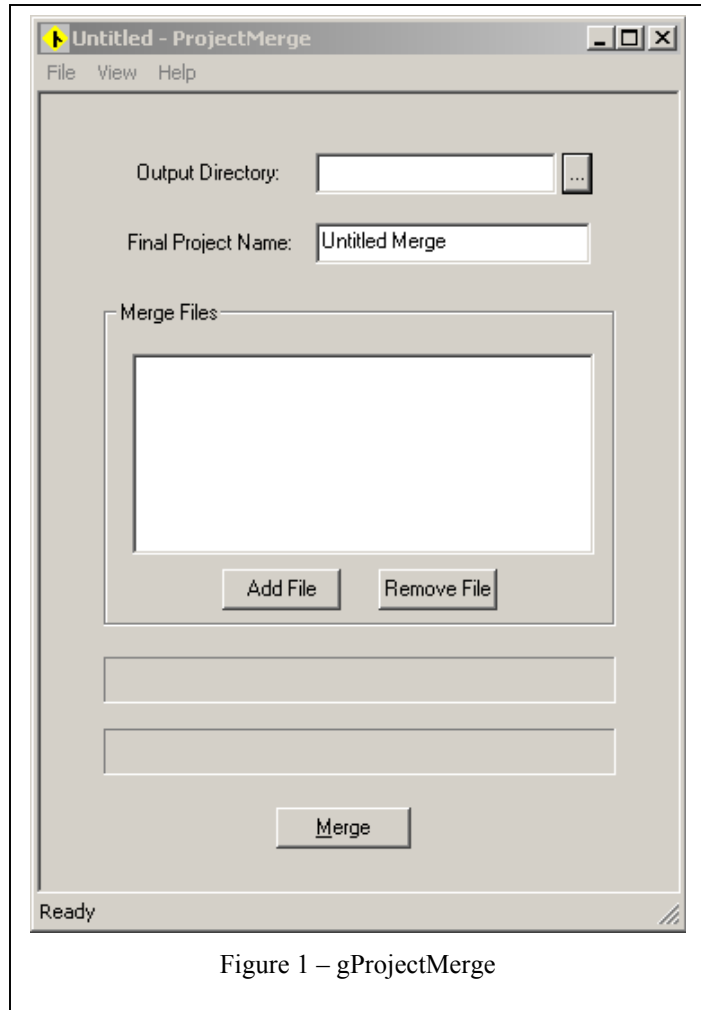


Figure 1 – gProjectMerge

Running gProjectMerge

To start ***gProjectMerge*** double click on the “***gProjectMerge***” icon. The screen displayed in Figure (1) will appear on the screen. The user simply picks a directory to output the project to, and then picks a name for the new project. The user then just adds as many files as he or she wants to merge together, and then clicks the “Merge” button. When ***gProjectMerge*** is finished it will give a “Done” message and you can now run the new merged project in “g”.

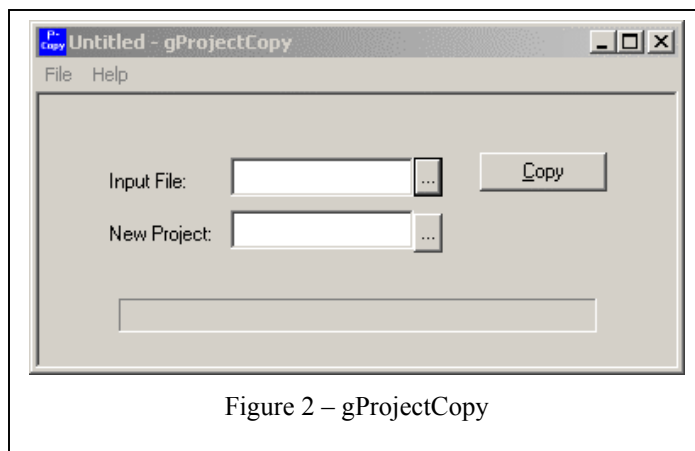


Figure 2 – gProjectCopy

Running gProjectCopy

To start **gProjectCopy** double click on the “**gProjectCopy**” icon. The screen displayed in Figure (2) will appear on the screen. The user simply picks a “g” project that he or she would like to copy, and then picks a new location and project name. The user then clicks the “Copy” button. **gProjectCopy** will give a “Done” message when it is finished copying.

Running gToASCII

To start **gToASCII** double click on the “**gToASCII**” icon. The screen displayed in Figure (3) will appear on the screen. The user simply picks a “g” project that he or she would like to export to text, and then picks and name for an ASCII text file. The user then clicks the “Run” button. **gToASCII** will give a “Done” message when it is finished copying. The user can now look that the “g” projects binary data as an ASCII text file.

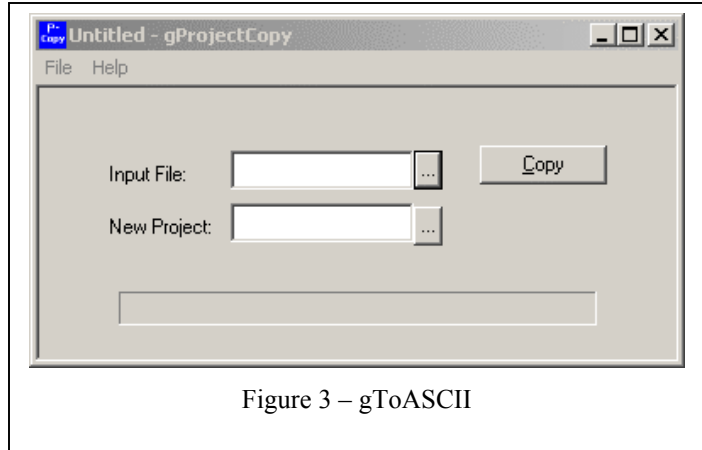


Figure 3 – gToASCII

License Information

gToolBag is free to all licensed users of “g”. Additional installations, including support, can be purchased directly from Micro-g.

Support

Questions concerning the operation of **gToolBag** software and any problems using **gToolBag** should be directed to:

microg@microgsolutions.com

You can expect to receive an email or phone call within forty-eight hours of your inquiry.

Maintenance

Periodically MGS may post an upgrade “patch” for **gToolBag** on the website. These patches will be posted without notification so please check back every few weeks to get the latest patch if applicable.