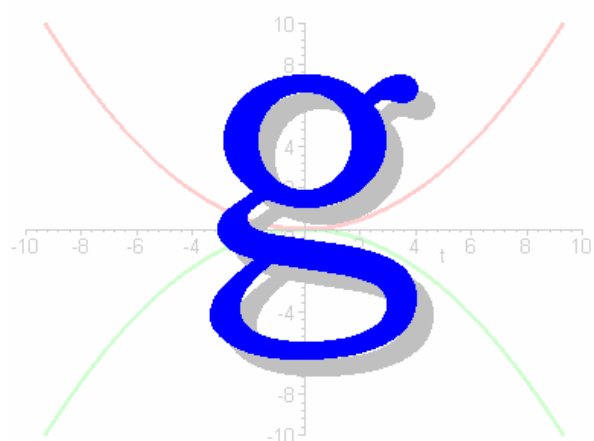


g7 User's Manual



MARCH 2007



Table of Contents

Introduction	4
System Requirements	4
Installing and Starting <i>g</i> for the First Time	7
Real-time Data Acquisition	8
<i>Information</i>	8
<i>System</i>	9
Instrument	9
Seismometer (Prototype FGL Only)	9
Computer Interface Cards	9
<i>Acquisition</i>	11
Sampling	11
Time	11
Rates	12
Red/Blue Sequencing	12
<i>Control</i>	13
Corrections	13
Laser	15
Seismometer	15
Tidal Correction	16
Drop Fit	16
Fit Sensitivity	16
<i>Uncertainty</i>	17
• <i>Setup</i>	17
• <i>Modeling</i>	18
• <i>System</i>	19
• <i>Environmental</i>	19
• <i>Set-up</i>	19
<i>Comments</i>	19
Beginning Acquisition or Reprocessing	20
Start Processing	20
The State Window	20
Drops	22
Fit Residuals	22
Sets	23



Additional Window Displays	24
<i>Specific Post-Processing Features:</i>	26
The Set View/Control Window	26
Reviewing Processing Parameters	27
Output File Status	28
Processing Status	28
Processing Finished	31
<i>Reviewing Processing Results</i>	31
Project Summary File	31
Set Summary File	32
Tide Correction Models	34
<i>Berger</i>	34
<i>ETGTAB</i>	34
Potential Filename	35
Tidal Parameters Filename	35
<i>OceanLoad</i>	36
Oceanloading Format	37
Figure 18. Example Ocean Load File Format.	37
<i>g Binary Data Files Structure</i>	38
Additional Menu Options	39
<i>Project</i>	39
New	39
Open	39
Close	39
Save	39
Save as Project	39
Save as Template	39
<i>Edit</i>	40
Reset	40
Time Offset	40
<i>Process</i>	40
Rate	40
Set Break Point	41
Go	41
Step	41
Break	41
Stop	41



g7 Absolute Gravity Data Acquisition and Processing Software

Quick Update _____	41
View Channels _____	41
<i>Options</i> _____	42
<i>Output</i> _____	43
<i>Additional Utilities, “Convert”</i> _____	44
<i>Additional Utilities “gProjectMerge”</i> _____	44
<i>Additional Utilities “gProjectCopy”</i> _____	45
License Information _____	47
<i>Support</i> _____	47
<i>Maintenance</i> _____	47



Introduction

This manual explains the operation of the Micro-g LaCoste “g” Absolute Gravity Data Acquisition and Processing Software. The software operates in the Windows™ environment. *g* can be used with all MGL absolute gravimeters, including the FG-5, A-10, FG-L gravimeters, and is capable of processing archived data collected with most Olivia versions (after being converted to the *g* format using the included “Convert” application).

The software package provides sophisticated data collection, processing and analysis capabilities including standard environmental gravity corrections necessary for μGal gravity measurements. The software allows the user to customize the data acquisition program for each site including geodetic coordinates, delayed start-up, set and drop rate and other detailed site information.

g requires a binary security file that is unique to each individual system to operate.

g users familiar with previous version of *g*, Olivia, or absolute gravity data acquisition will find the software easy to use and operate. Those new to absolute gravity measurement should read this operation manual carefully before operating any MGS absolute gravimeter or post-processing any absolute gravity data.

System Requirements

g relies on both text and graphical output to assist users in quickly evaluating instrument performance and results. *g* runs best with the following minimal standards:

Operating System:	Windows 98, 2000, NT, XP, Vista
Free Hard Drive Space:	1 GB or greater
RAM:	512 MB or greater
Processor:	Intel™ P3 or greater
Processing Speed:	1 GHz or greater



How g Processes Gravity Data

This manual assumes the user is familiar with the operation of a Micro-g LaCoste freefall gravimeter. An object is dropped in a vacuum and a laser interferometer is used to accurately track the freefall. The precise timing of optical fringes (which provide distance information) allows the acceleration of gravity, g , to be determined.

The g software communicates with the Time Interval Analyzer (TIA) card in the computer to record the precise time of the zero crossing of the optical fringes. Plotting the distance as a function of time results in the expected parabolic curve. The precise formula is:

$$\left. \begin{aligned} x_i = x_0 + v_0 \tilde{t}_i + \frac{g_0 \tilde{t}_i^2}{2} + \frac{\gamma x_0 \tilde{t}_i^2}{2} + \frac{1}{6} \gamma v_0 \tilde{t}_i^3 + \frac{1}{24} \gamma g_0 \tilde{t}_i^4 \\ \tilde{t} = t_i - \frac{(x_i - x_0)}{c} \end{aligned} \right\}$$

The complications arise due to the fact that the gravity gradient can not be neglected and that the path length of one of the interferometer arms is decreasing (this latter effect is sometimes referred to as the “speed of light” correction). The g software uses a least-squares fit to calculate the best fit of the (x_i, t_i) data to the above equation. The free parameter of interest is g , the acceleration.

This determines the best estimate of the absolute value of g at the beginning of the drop.

However, to be a truly useful value, a series of corrections are usually performed:

- **Transfer Height Correction.** This transfers the gravity value from the height of the top of the drop (which can change from setup to setup and from instrument to instrument) to a more convenient value.
- **Barometric Pressure Correction.** As the local air pressure changes, so will the measured gravity value due to direct attraction. By comparing the current pressure with the standard local value, the gravity value can be corrected to better estimate the value on a “normal” day.
- **Earth Tide and Ocean Load Corrections.** As the earth changes shape due to solar and lunar attraction, and as the mass of the oceans deform the earth’s crust, the local value of g will change by 100s of μGals . Through empirically derived formulas, these effects can be minimized to estimate the expected average value of g for any given time at the current location.
- **Polar Motion Correction.** As the earth wobbles on its axis, the local centripetal acceleration will change the local value of g . By entering parameters related to the earth’s current orientation, this effect can be corrected.



In addition to these environmental considerations, there are also instrument details that need to be accounted for:

- Reference X_0 Correction. The mechanics of the dropping system are such that it cannot return **exactly** to the same height each time. However, x_0 is one of the free parameters in the equation of motion. Using this value to normalize all of the drops to same height is technically necessary. Note however, that this correction is usually on the order of $0.01 \mu\text{Gal}$ – insignificant.
- The wavelength of the laser may change over the course of time, or may “hop” to a new value mid-measurement. The software needs to be able to account for this.

The g software is a complete package designed to work with Micro-g LaCoste absolute gravimeters to acquire and process gravity data. In addition to the above calculations and corrections, the software provides real time plot capabilities and statistical analyses allowing the user a clear understanding of the gravity data.

The manual below starts with real time set up of the software. This includes site and instrument specific parameters in addition to control of the corrections. It then continues with post-processing considerations. Finally it ends with a more detailed description of the tidal routines and advanced software functions.



Installing and Starting *g* for the First Time

You will either have received a Compact Disc media with at least the following (“f” means file and “d” means directory), or you will have downloaded the *g* Setup file from <http://www.microglacoste.com>.

- Completely uninstall all previous versions of *g*.
- Double click Setup.exe. Follow the instructions. It is highly recommended that you accept ALL default installation paths.
- When starting *g* for the first time, it will prompt you to create a small binary file, “SysChk.bin” that is unique to your computer.
- Email SysChk.bin to Aaron Schiel at mking@microglacoste.com and wait for him to send you gPWInfo.bin. This usually takes less than twelve hours during normal the business week. **Note** that the files are unique for each computer, so please send one file at a time!
- Upon receipt of gPWInfo.bin, run *g* again, and follow the program’s instructions to install the password file.

You are now ready to run *g*.

IMPORTANT! Due to how the software protection in *g* works, if at any time the user adds or removes hardware from the computer in which *g* is installed, they must obtain a new password file by following the above steps.



Real-time Data Acquisition

g allows both real-time data acquisition and post-mission processing. To begin a data acquisition project, choose Project | New from the main *g* menu. The four default screens will appear, but there will be no information in the Set Tree view. By default, *g* is set to run an FG5 instrument at the Micro-g LaCoste facility. To set the software up for data acquisition and processing at your location, you must modify some or all of the parameters under **Process | Setup**.

Information

This menu is concerned with where the instrument is located.

- Site Name (free form text)
- Site Code (free form text)
- Latitude (decimal degrees, “DD”)
- Longitude (DD)
- Elevation (meters above sea level)
- Nominal Pressure (mBar – this is the long term, mean pressure value at the site, which is in generally **not** the current pressure value)
- Vertical Gravity Gradient ($\mu\text{Gal}/\text{cm}$, normally always negative). If unknown, the standard free air value is $-3.09 \mu\text{Gal}/\text{cm}$.
- Transfer Height (cm). This is the height that the gravity value is reported at. Typical values are 0, 100, 130 cm. The gradient value is used to transfer the gravity value calculated at the top of the drop (different for each instrument) to the requested transfer height.
- Measured Setup Height (cm). This changes from setup to setup.
- Barometric Factor ($\mu\text{Gal}/\text{mBar}$). Typically $0.3 \mu\text{Gal}/\text{mBar}$.
- Polar motion X and Y components (arcsec). These need to be updated approximately once per week. Current values are always available at <http://microglacoste.com>.

Note in previous versions of the *g* Software, the “Setup Height” was referred to as the “Reference Height” and the “Transfer Height” was referred to as the “Datum Height”. The name changes were done only for the purposes of clarity.

Convert Button – use this feature to convert Degree/Minutes/Second (DMS) coordinates or Universal Transverse Mercator (UTM) coordinates to decimal degrees (DD).



System

System – The following parameters may be set from the System Page:

Instrument

- Instrument Type - Select FG5, A10 or FGL. Certain options are enabled or disabled according to the instrument selection.
- S/N – Enter the serial number for note keeping purposes.
- Laser Type – Select the laser type and parameters associated with the laser.
 - WEO 100 – Laser Voltage, Wavelengths, and Serial Number. Enter the 1F voltages for each peak, DEFG (it is not necessary to enter values for HIJ if the measurement begins with peak D, E, F, or G selected). The software will use this voltage to determine the laser peak in use. Please refer to the Instrument operator's manual for more information. In general, it is **never** necessary to change the laser wavelength! Finally the Modulation Frequency is unique to each WEO 100 laser. This must be entered accurately to x,xxx.xxx decimal places.
 - WEO 200 – Wavelength and Serial Number. In general, it is **never** necessary to change the laser wavelength!
 - ML-1 – Blue and Red Lock wavelength, and Warm-up Mode. Refer to the information provided with your instrument for the wavelength values. These values are unique to each ML-1 laser, and must be entered accurately to xxx,xxx,xxx decimal places. Do **not** change these values unless told to do so – this will directly affect the calculated gravity value! Warm-up mode should typically be about 60 seconds – this refers to the amount of time before data acquisition that the laser enters lock mode. Enter the serial number for note keeping purposes.

Seismometer (Prototype FGL Only)

- Seismometer Type – Users may select from a variety of seismometer options supported by Micro-g.
- Sampling Frequency – Users may enter the sampling frequency (Recommend is 10xCutoff)
- Sampling Time – Users may enter the amount of time to sample (Recommended is 200ms for small dropping chambers)

Computer Interface Cards

- Fringe Card – Currently Micro-g supports only the GuideTech ISA or PCI GT650 series time interval analyzer in real time acquisition. The Setup button allows the user to change the default location of the GuideTech configuration file, the base address of the card, the Input Multiplexor and Scale Factor an number of fringes to acquire. Recommended parameters for an FG5 (A10 or FGL) are:
 - FPG File = c:\Program Files\Guide\GT650\FPGA\gt65x2.fpg



- Address = 0
- Input Multiplexor = 4
- Pre Scale = 250 (100)
- No. Fringes Acquired = 700
- Currently g supports the IOTech 200 (ISA) or 2000 (PCI) series A2D boards and the National Instruments PCI-6013 A2D board. The SETUP button allows the user to set the acquisition parameters for each channel. For the standard Micro-g configuration, these parameters should be for Channel(s) respectively:
 - Temperature (0) – UniPolar, 1.25V, 0, 100
 - Super Spring (1) – BiPolar, 1.25V, 0, 1
 - Ion Pump (2) – BiPolar, 5V, 0, 1
 - Laser Voltage (3) – BiPolar, 5V, 0, 1
 - Barometer (4) – UniPolar, 10V, 0, 1
 - Serial Barometer 0, 68.947¹
 - Analog 537.5, 125
 - User Sensor(5) – BiPolar, 5V, 0, 1
 - User Sensor(6) – BiPolar, 5V, 0, 1
 - User Sensor or Seismometer (7) – BiPolar, 0.3125V, 0, 1

Advanced

The Advanced button should only be used by knowledgeable users. Options settable under the Advanced menu include:

- Factory Height (Instrument Specific and Set ONLY by Micro-g LaCoste). This is the sum of all the internal hardware heights. Please refer to your instrument materials for a precise value.
- Clock Frequency. Nominally 10 MHz, but is calibrated by Micro-g LaCoste or a standards laboratory. Again, the precise value is unique to your instrument.
- Hardware TTL Prescale Factor (Determined by Micro-g LaCoste). Typically this value is 1 for FG5 and FGL, and 4 for A10. Please refer to your instrument materials for the correct value.

¹ Serial Barometer use the offset and multiplier inside the A2D card set for scaling.



Acquisition

The Acquisition set up page is shown below.

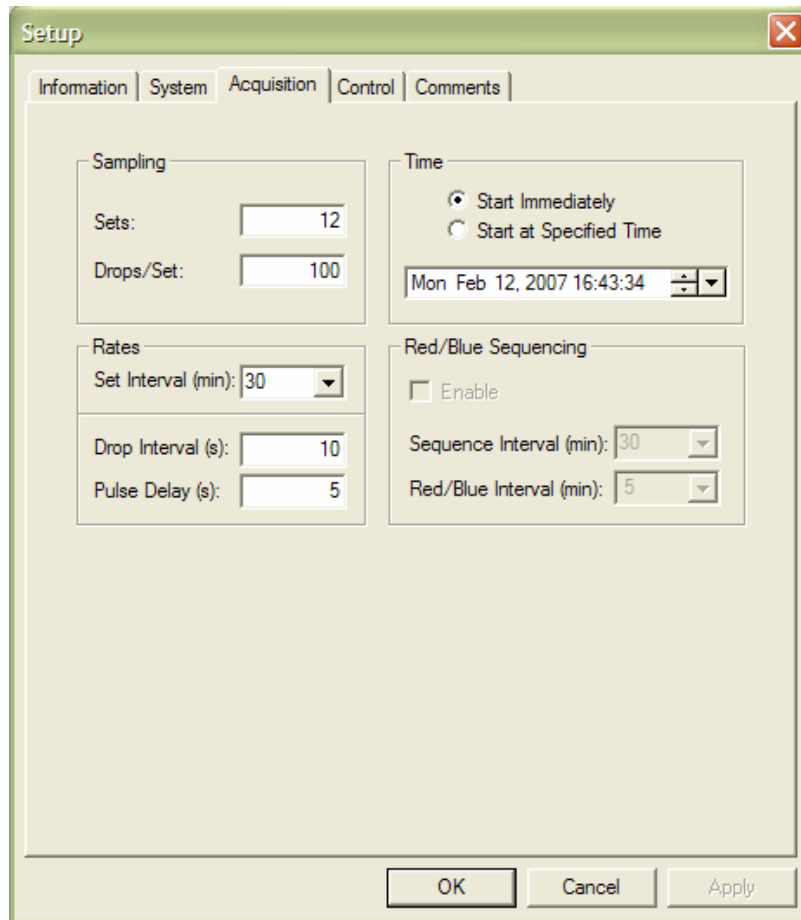


Figure 1. Process | Setup | Acquisition Dialog Box.

Sampling

- Sets – Select the number of Sets to acquire during the project.
- Drop/Set – Select the number of drops in each set during acquisition.

Time

- Start Immediately –Instructs the software to begin data acquisition immediately following Process | Go or “F5”.
- Start at Specified Time – Instructs the software to begin data acquisition at the time indicated.

Note Time on the PC Clock must be set to Coordinated Universal Time (GMT) with daylight savings disabled - not local time.



Rates

- Drop Interval – Used to select the drop rate interval in seconds. Recommended rates are system-dependent. Please consult the system manual.
- Set Interval – Used to select the interval in minutes at which to start new sets. The drop down menu contains some commonly used intervals.
- Pulse Delay – This is the amount of time in seconds between the drop and the time the object is lifted. Systems with digital controllers need much less time to lift than do systems with analog controllers. An approximate value is set automatically by g .

Red/Blue Sequencing

Red/Blue sequencing allows users with L Series lasers to acquire data with both laser frequencies in a short time interval and still spread the entire project over a longer time interval. For example, data can be acquired with the red mode and then a few minutes later with the blue mode. Then, after an hour, the whole red/blue sequence can begin again.

- Enable – Enables red/blue sequencing.
- Red/Blue Interval – Time interval between the start of a red set and the start of the next blue set (typically a few minutes).
- Sequence Interval – Time interval between the start of two red sets.

An example of Red/Blue Sequencing is shown below:

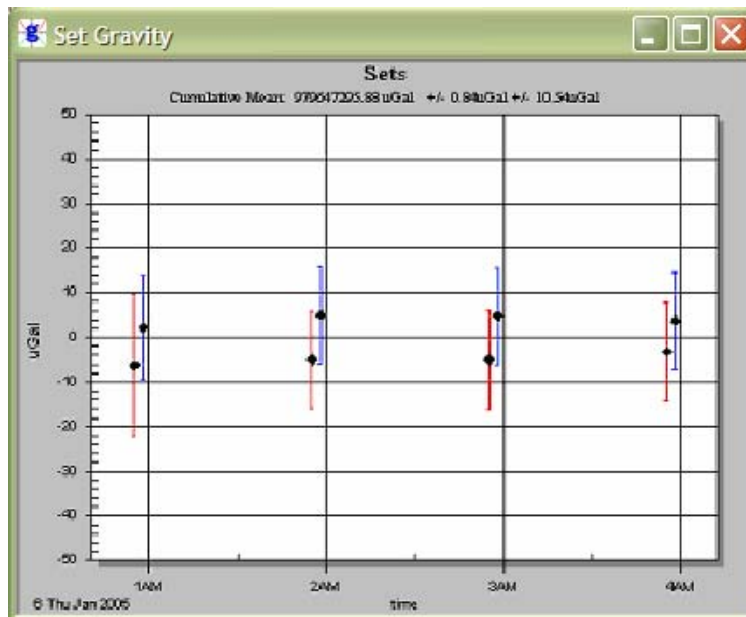


Figure 2. Example of Red/Blue Sequencing Acquisition Mode.



Control

The following information may be set from the Control Page.

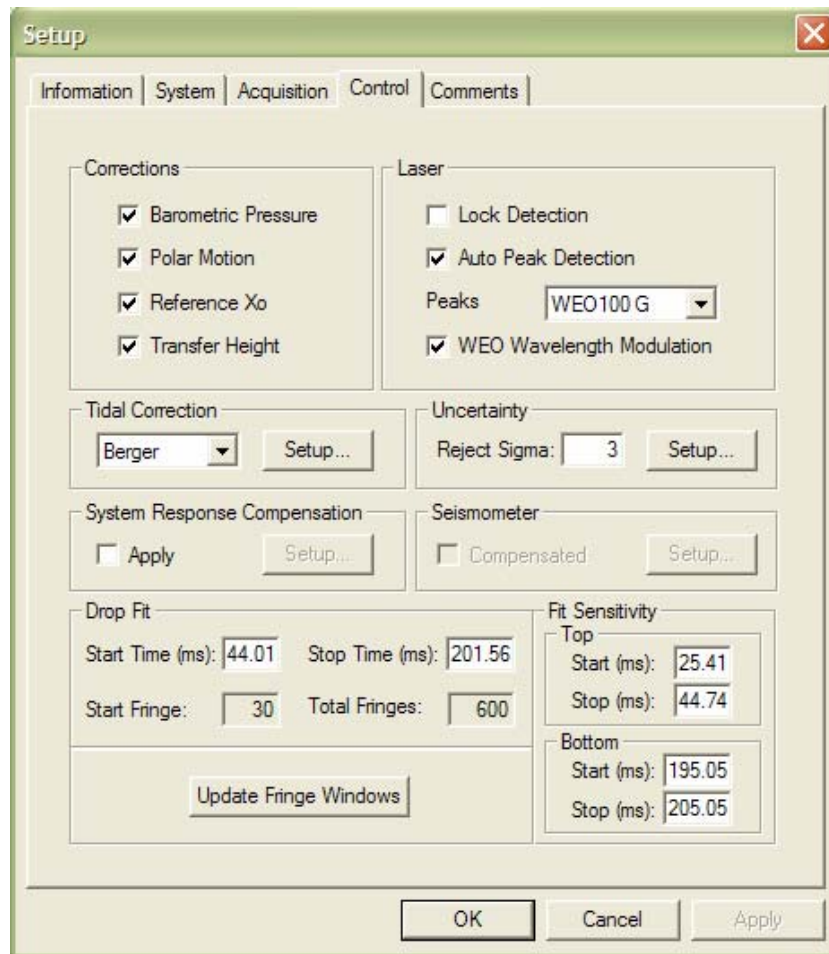


Figure 3. Process | Setup | Control Dialog Box.

Corrections

- **Barometric Pressure** - applies barometric pressure correction. The observed gravity is normalized to a nominal pressure at each site by applying a correction based on the observed atmospheric pressure during the observations. This pressure correction is applied at each drop. The formula used to compute the pressure correction is:

$$C(p) = A * (P(o) - P(n))$$



Where A = The barometric admittance factor ($\mu\text{Gal}/\text{mBar}$) specified in the Information Setup. This value is usually between 0.30 and 0.42. The recommended value (per IAG, 1983) is 0.30. C(p) = Barometric Pressure Correction in μGal . P(o) = Observed barometric pressure. P(n) = Nominal barometric pressure in accordance with DIN Standard #5450.

- **Polar Motion** – applies polar motion correction. This correction compensates for changes in centrifugal acceleration due to variation of the distance of the earth’s rotation axis from the gravity station. This correction is normally re-computed using pole positions that are determined nearest to the observation time for each station. The formula specified in the IAGBN: Absolute Observations Data Processing Standards (1992) is used. The formula reads:

$$\delta g = -1.164 \times 10^8 \omega^2 a^2 \sin \varphi \cos \varphi (x \cos \lambda - y \sin \lambda)$$

where:

- δg = polar motion correction in μGals ,
- ω = earth’s angular rotational velocity (rad/s),
- a = semi-major axis of the reference ellipsoid (m),
- φ = geodetic latitude (rad),
- λ = geodetic longitude (rad),
- x, y = polar coordinates in the IERS system (rad).

Mean pole positions are determined at daily intervals and issued daily by the IERS Bulletin. The Bulletin A containing the polar motion coordinates in final and predicted format is available at no cost on the web at <http://maia.usno.navy.mil/bulletin-a.html> . In addition, the Micro-g LaCoste website, <http://www.microglacoste.com>, has daily updates of the polar motion, as well.

- **Reference Xo** – applies reference Xo correction. In the equation of motion² as used in g, gravity is determined at to not at x_o . In order to calculate the gravity at the reference position, the distance to the start position, x_o , is multiplied by the site gravity gradient and used to correct the final calculated gravity value. This correction is generally very small ($<0.05\mu\text{Gal}$).
- **Transfer Height** – applies datum transfer correction. The gravity value is actually determined at the top of the drop, inside the instrument dropping chamber. This height can vary from instrument to instrument, and is, in general, a not-so-useful location. However, the observed gravity for each drop can be transferred to a user specified height (labeled “transfer”) entered on the site information page. Typical gravity transfer heights are 0 cm, 100 cm, or 130 cm (often used for FG5s). The transfer is calculated by adjusting the gravity value using the difference between the measured s height plus factory height and the transfer height, and multiplying the difference by the site gravity gradient.

² For more information see Niebauer et. al, A New Generation of Absolute Gravimeter, Metrologia, 1995.



Note that in earlier version of the g Software, this was known as the “Datum Height”.

Laser

- WEO 100
 - By selecting “Lock Detection” and connecting the “Laser Lock” signal from the back of the WEO 100 controller (or the WEO 200) to CH 7 of the SIM (or older Patch Panel units), the software will ignore drops that occur while the laser is unlocked. The software will then try another drop immediately until the laser is locked. The software will then process drops it until it “catches up” with the desired drop interval.
 - “Automatic Peak Detection” determines the locked peak by checking the input voltage on the Patch Panel Laser input channel. *g* uses the measured voltage on Channel 3 to determine which peak (DEFG or GHI) was valid during the drop. If for some reason the voltage in Channel 3 is invalid, the user can still deselect Automatic Peak Detection and manually enter the wavelength from the pull-down menu.
 - “Modulation Frequency” includes the modulation frequency entered in the System Laser Setup page in the equation of motion. This option should always be selected when using a WEO 100 laser.
- WEO 200
 - By selecting “Lock Detection” and connecting the “Laser Lock” signal from the back of the WEO 100 controller (or the WEO 200) to CH 7 of the SIM (or older Patch Panel units), the software will ignore drops that occur while the laser is unlocked. The software will then try another drop immediately until the laser is locked. The software will then process drops it until it “catches up” with the desired drop interval.
- ML-1
 - For ML-1 or AL-1 lasers, the user can select the red or blue wavelength, or select Alternate. In Alternate mode, the software will send an impulse signal through the digital output of the patch panel and switch between the two modes between each set. Blue lock sets will be displayed in blue on the Sets view while Red lock sets will be displayed in Red. Note that in normal situations it is highly recommended to use Alternate Mode. The software automatically takes an average of the red sets, an average of the blue sets, and then the resultant average of these values. It is the average of the blue and red wavelengths that is stable over long time periods (many months).

Seismometer

This enables the compensation of the seismometer data when used on the FGL Prototype instruments.



Tidal Correction

Please see the section, “Tidal Corrections” below for a detailed discussion of the earth tide and ocean loading corrections. Please note that, in general, it is necessary to run the Ocean Load program once for each new location occupied by the gravity meter.

Drop Fit

This allows a subset of the collected fringes to be processed (to avoid fitting during the sensitive release and catch phases of the drop). Default parameters for an FG5 (A10/FGL) are

- Start Time = 35 (20) ms
- Stop Time = 200 (135) ms

Fit Sensitivity

The calculated gravity value is determined using the fringes selected in “Drop Fit”. Ideally, this value is not heavily dependent on the choice of these fringe values. The “Fit Sensitivity” plots in the View menu allow the user to determine the change in the calculated gravity value as different portions of the drop fit are processed. By default, a few milliseconds around the start time and stop time are plotted. Typically the gravity value should be constant within a few μGals . Given the nominal fit times above, the sensitivity settings for an FG5 (A10/FGL) should be approximately:

- Top Start – 25 (15) ms
- Top Stop – 45 (25) ms
- Bottom Start – 195 (130) ms
- Bottom Stop – 205 (140) ms

System Response

System response is an advanced fitting routine that fits multiple numbers of damped sinusoids to the standard equation of motion. Note that in most applications, it is **not** necessary to use system response! It is designed for field applications in which the measurement surface is hollow, or otherwise unstable. In laboratory or stable, pier-type situations, it will not be necessary to use System Response. Because System Response can mask a problem with the site (by flattening out a residual signal that would otherwise indicate a problem), **it is recommended to only use System Response in post-processing mode.**

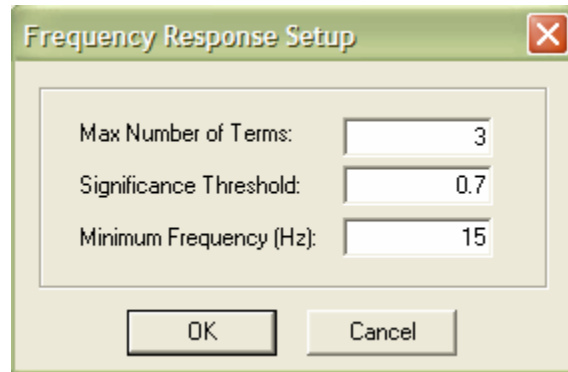


Figure 4. System Response Setup Dialog Box.

To apply System Response, check the box and press the Setup button. The menu shown in Figure 9 to the right will appear. It is recommended to accept the default values of 3 terms, 20% significance threshold and 15 Hz. When System Response is enabled, it is possible to view the Power Spectral Density of the Residual Signal.

Uncertainty

Drop rejection significance determines which drops are automatically rejected by the software. The default value is 3 which means that in a set, any drop that is more than 3σ from the mean is rejected. Note that this function is purely statistical – there is no hardware information used to reject drops.

- **Setup**

On the lower left hand corner of the Uncertainty Setup page is a drop-down dialog box and an Apply button. To set the MGS recommend guideline values for a specified instrument, choose the appropriate instrument in the dialog list and press the Apply button.

g now calculates the total uncertainty for each set and for the final project gravity value. The total uncertainty is given by:

$$\delta_{tot} = \sqrt{\delta_{sys}^2 + \delta_{stat}^2}$$

where δ_{stat} is the statistical uncertainty given by the set scatter (standard deviation) divided by the square root of the number of sets:

$$\delta_{stat} = \sigma_{set} / \sqrt{N_{set}}$$

and δ_{sys} is the total systematic uncertainty, which is described below.

The Statistics | Setup button leads to the menu shown in Figure 5. The statistical uncertainty estimate is based on the estimated uncertainties for many different components of the measurement. Components are grouped into four separate



areas: Modeling, System, Environmental and Set-up. Default values are determined from previous publications and from in-house experience.

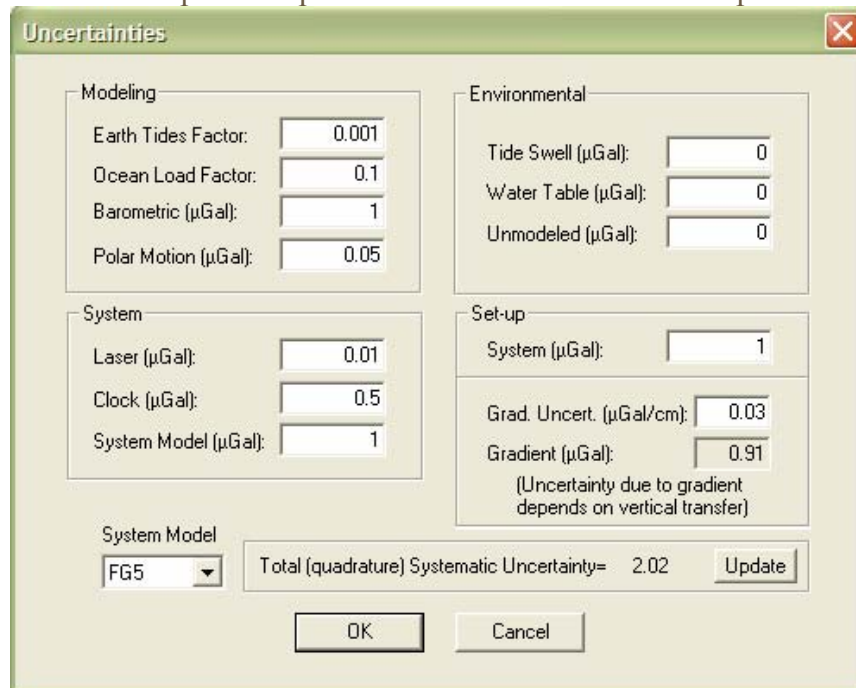


Figure 5. Systematic Uncertainty Setup Dialog Box.

- **Modeling**

Modeling uncertainties usually do not vary from station to station or among different instrument serial numbers or models. Recommended values³ for modeling uncertainties are:

Barometric	1.0 μ Gal
Polar Motion	0.05 μ Gal

The errors for the earth tide and ocean load calculations are estimated as fractions of the size of the actual correction (determined at the time of the measurement), and are nominally:

Earth Tide	0.001 x Correction
Ocean Load	0.1 x Correction

For example, if at a given time the earth tide correction is 50 μ Gal, then the uncertainty on the correction is 0.05 μ Gal.

³ The default values are guidelines only. For details, including position and seasonal variation, see Niebauer et. al., A new generation of absolute gravimeters, Metrologia, 1995.



- **System**

System uncertainties vary depending on what elements are contained in the absolute gravimeter system. FG5 are the most accurate and precise MGS instruments and observations taken from these types of instruments should be weighted much more than those taken from an FgL. Recommended values for modeling uncertainties are:

Laser	0.05 μ Gal (WEO), 0.1 μ Gal (ML-1)
Clock	0.5 μ Gal (Rubidium Oscillator)
System Model	1.1 μ Gal (FG5), 10 μ Gal(A10), 5 μ Gal(A5), 10 μ Gal(FGL)

- **Environmental**

Environmental errors are highly site dependent and should be modified by only experienced users. Recommended values for all environmental uncertainties are 0.0 μ Gal (zero) unless a user is very knowledgeable about the site in question.

- **Set-up**

Set-up uncertainties are depending on both the instrument AND the operator. For example, an experienced operator can set up an FG5 with a system error of 1.0 μ Gal. An experienced relative meter operator can measure a gradient to 0.03 μ Gal/cm. Set-up errors change according to the instrument and may be increased with respect to the operator.

- **Gradient**

0.03 μ Gal/cm (For experienced relative meter operators)

Comments

Users may enter up to 100 lines of field or processing notes in this section. To enter a new line, press Ctrl+Enter.



Beginning Acquisition or Reprocessing

Start Processing

Once *g* is setup according to user-set parameters, it is ready to begin processing the data. Processing can be started three ways:

1. Select Go... from the Process menu.
2. Press the “Go” button (▶).
3. Press “F5”.

In real time mode, the drops will occur as prescribed in Setup | Acquisition. In Post-Processing mode, the drops will be processed as prescribed in Process | Rate.

Note that if a minor problem is detected in the Setup as acquisition begins, it is possible to Pause the data collection, and then resume.

As the project progresses, the Set data filenames are displayed in the left set view/control window. Notice that for this example, each set is named sequentially (in this example 001 through 012) with the project name used as the prefix and “gsf” as the suffix. By default *g* opens four “Views” of the data at start-up. Each view can be enabled by the tab control at the lower part of the window. The default windows are:

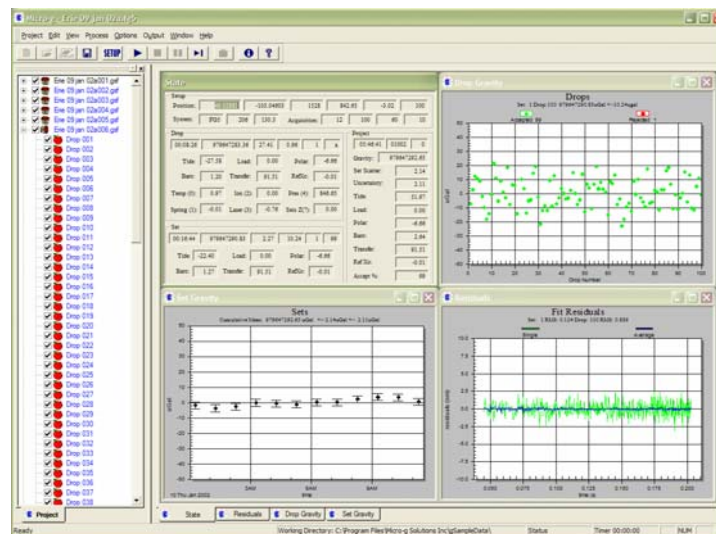


Figure 6. Open project file.

The State Window

The main window *g* uses to convey information to the user is the State Window. The State Window contains four separate sections (note that the meaning of each box value



can be determined by “hovering” the mouse cursor over the box until the “tool tip” appears):

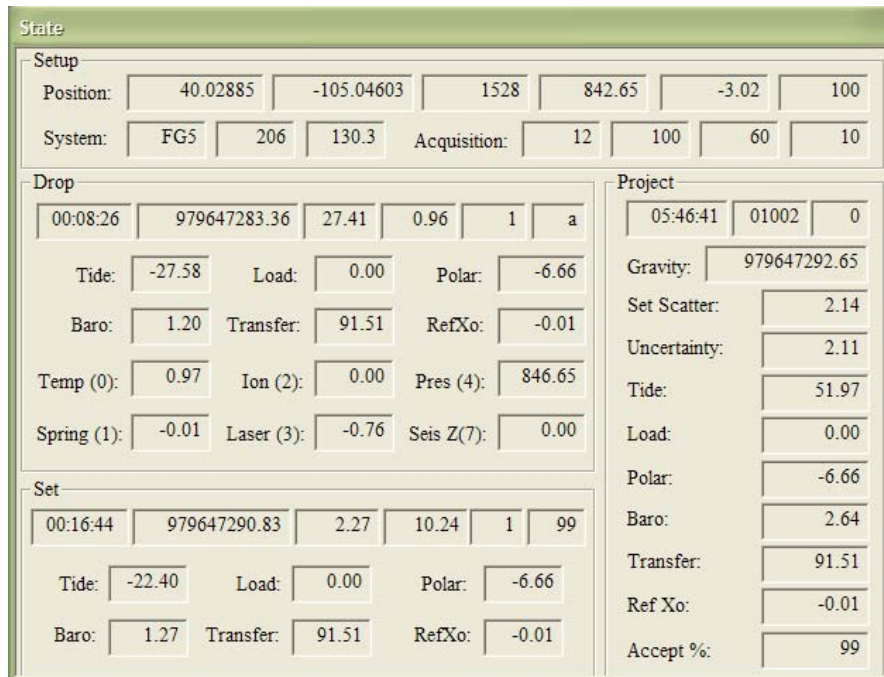


Figure 7. State Window

- Setup – Basic setup and station information is displayed here including Latitude, Longitude, Elevation, Standard Pressure, Gradient, System Type, System Serial Number, Number of Sets Acquired (or to Acquire for Realtime), Number of Drops per sets, Time interval in minutes between sets and time interval in seconds between drops.
- Drop – Information about each individual drop including time, absolute gravity, standard deviation, RMS, number, accepted (a) or rejected (r) and Laser Lock code, tide correction, ocean loading correction, polar motion correction, barometric correction, transfer height correction, reference Xo correction, temperature (C), super spring position (V), Ion pump monitor (V), laser output (V), barometric pressure (mBar) and average seismometer reading (V).
- Set – A group of drops is referred to as a “set”. Information about each individual set including mean time of the accepted drops in the set, mean absolute gravity, total uncertainty, drop to drop scatter, set number, number of accepted drops, percentage of accepted drops, mean tide correction, mean ocean loading correction, mean polar motion correction, mean barometric correction, mean datum transfer correction, and mean reference Xo correction.
- Project – The group of all the sets constitutes a “project”. Summary information about the project including mean time of sets processed, set to set scatter, total uncertainty, mean tide correction, mean ocean loading correction, mean polar



motion correction, mean barometric correction, mean datum transfer correction and mean reference X_0 corrections.

Drops

The Drops view displays individual drops minus the mean value of the set. Accepted drops, i.e. those that are within the user-selected statistical range, are plotted in green, while rejected drops are plotted in red. The top of the view informs the user of the current set number, the current drop number, the current drop-to-drop scatter of the set, as well as the number of drops accepted and the number of drops rejected.

Fit Residuals

The Fit Residuals View displays the residual signal (the difference between the actual fringe time and the least squares fit estimate of the position at that time). With system response disabled (Figure 8), the green signal is the residual vector from the current drop while the blue signal represents the average residual of the accepted drops. If the instrument is working properly, the blue signal should ALWAYS be smaller in amplitude than the green signal. If a drop is rejected, its residual signal is plotted in red.

If system response is enabled (Figure 9– see **System Response** discussion below), the orange signal is the compensated residual vector from the current drop, the green signal is the uncompensated residual vector from the current drop, and the purple signal represents the compensated average residual of the accepted drops.

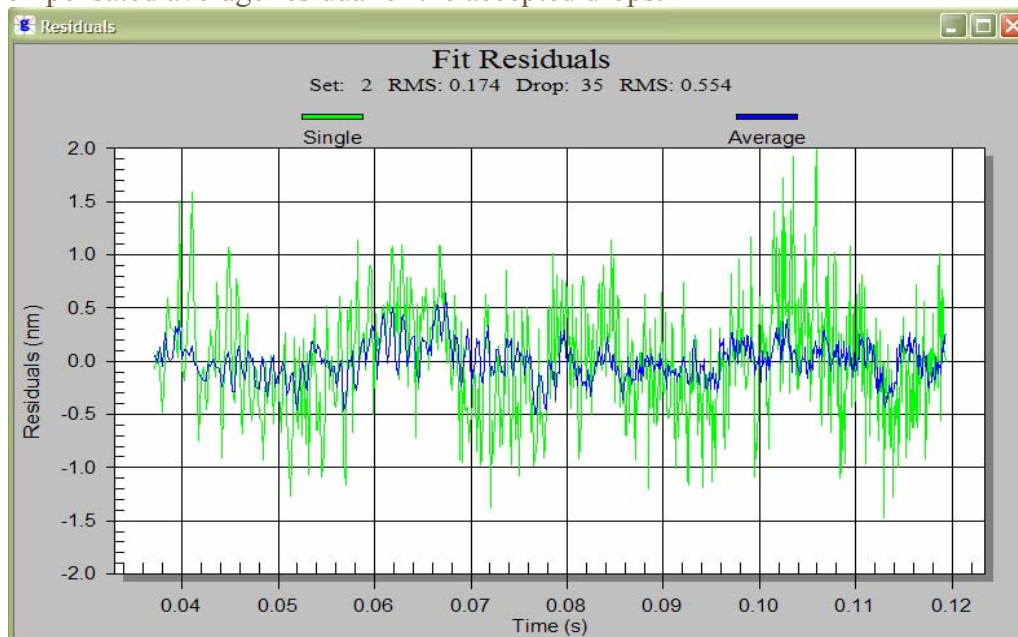


Figure 8. Drop Residuals - System Response Disabled.

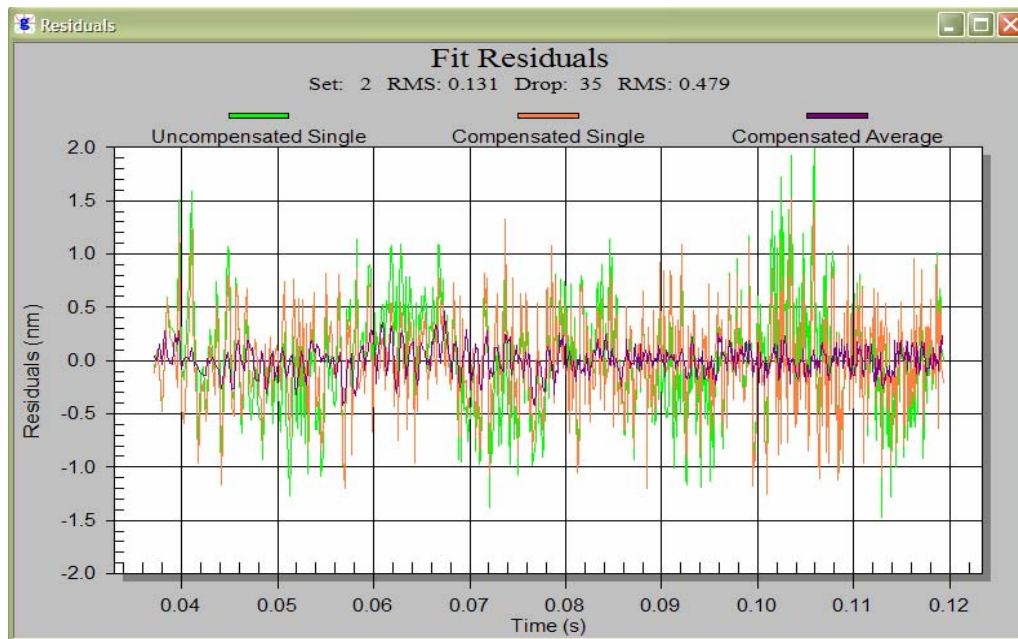


Figure 9. Drop Residuals - System Response Enabled.

Sets

The Sets view displays individual set gravity values minus the mean value of the project.

Each set is plotted with an error bar that indicates the range of the uncertainty for the individual set (based on the drop scatter). The top of the view informs the user of the current cumulative mean for the project, the set to set scatter, and the total uncertainty of the project mean.

For g Versions 6 and later, the current set value will be updated with each drop (this is true after the first set is complete). This allows quick verification that the mean value is consistent with earlier sets. See Figure 10 for an example.

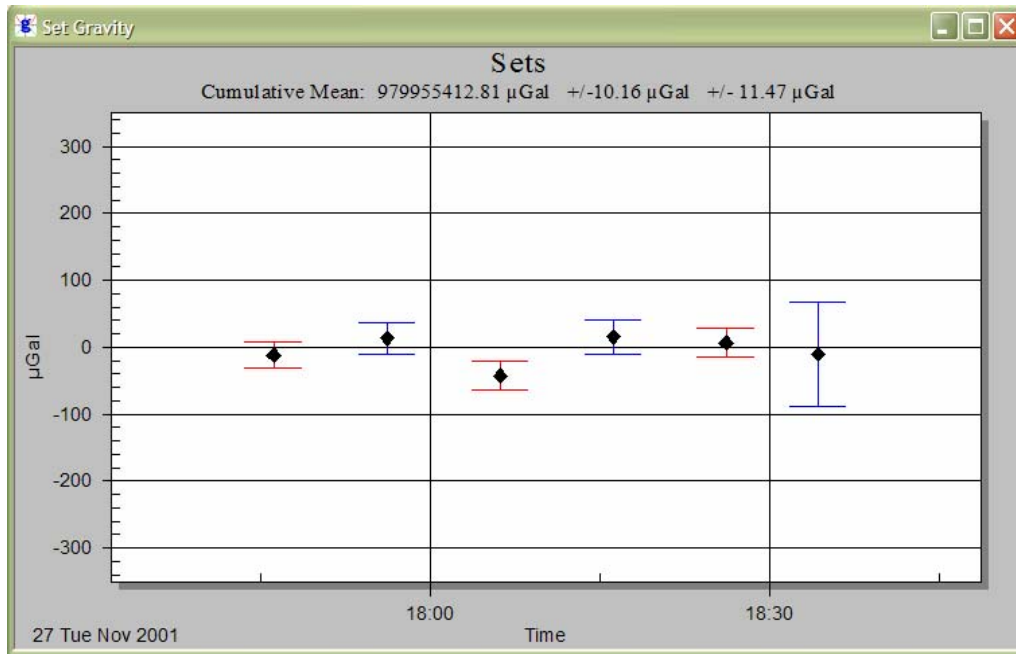


Figure 10. Current Set Value Update (A10 example data). The first 5 sets are complete (100 drops each), and the 6th set is only on drop #3. The mean value of the 6th will approach the established mean, and the error bars will decrease as more drops are acquired.

Additional Window Displays

In addition to the default displays, Tree Control, State, Drops, Sets and Fit Residuals, *g* also supplies a variety of views to convey information about processing (or data acquisition) status. A description of each view not previously described follows:

- *Set Histogram* – Displays a histogram of the processed sets. In general, users should expect to see normally distributed data.
- *Set Sensors* – Displays up to six separate charts. Charts 1-5 show the default channels for a Micro-g Patch Panel: Temperature, Super Spring, Ion Pump, Laser and Barometer. The sixth chart is reserved for channels 6, 7 and 8 and stacks all three channels onto one graph if enabled.
- *Set Corrections* – Displays six separate charts, one for each type of correction applied to the calculated gravity value: Tide, Ocean Loading, Polar Motion, Barometric, Datum Transfer and Reference Xo. Units are in μGals .
- *Set Fit Sensitivity* – Displays the set standard deviations.
- *Drop Histogram* - Displays a histogram of the processed drops for the currently processed set. In general, users should expect to see normally distributed data.
- *Drop Sensors* - Displays up to six separate charts for the currently processed set. Charts 1-5 show the default channels for a Micro-g Patch Panel: Temperature,



- Super Spring, Ion Pump, Laser and Barometer. The sixth chart is reserved for channels 6, 7 and 8 and stacks all three channels onto one graph if enabled.
- *Drop Corrections* - Displays six separate charts, one for each type of correction applied to the calculated gravity value for the current set: Tide, Ocean Loading, Polar Motion, Barometric, Datum Transfer and Reference Xo. Units are in μGals .
 - *Drop Parabola* – Displays the trajectory of the object with time on the X axis and distance on the Y axis. This graph is useful to view dropping chamber and fringe data acquisition performance.
 - *Drop Seismometer* – This view is applicable for “LS” meters only and has two components. If seismometer data is used directly in the solution, the graph shows the compensated versus uncompensated residuals (nm). If the seismometer data is NOT used in the solution, the graph shows the seismometer velocity (mV).
 - *Drop Residual PSD* – This view shows an autoscaled PSD of the residual signal ONLY IF Frequency Response is enabled.
 - *Drop Fit Sensitivity (Top and Bottom)* – Displays the change in the calculated gravity value as different portions of the drop fit are selected. Values are displayed relative to the value determined at the nominal fit (selected in Setup|Control).

Note: Viewing many displays can significantly slow down data processing and this can in turn result in potential memory violations. If your system does NOT have a high end graphics card (>32mb on-board memory), minimize the number of open views.



Specific Post-Processing Features:

The Set View/Control Window

When opening an old project (where data has already been acquired), g automatically displays the Set View/Control Window at start-up. This window is used to select which sets are to be processed and to set a break point in the processing if necessary. The figure below shows a detailed view of the Set View/Control Window. The check boxes to the left of the Set Filename indicate whether or not the set is included in the processing. Sets may be checked or unchecked by placing the mouse cursor directly over the box and clicking the left mouse button.

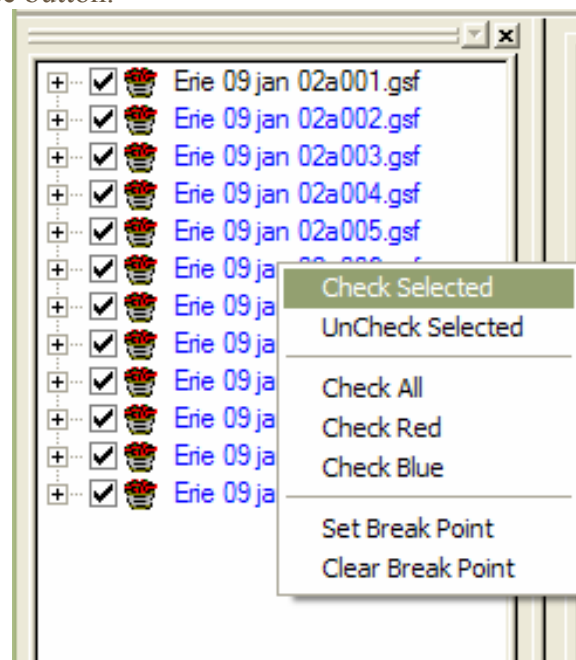


Figure 11. Right Mouse Button - State View/Control Window.

Optionally, if the left mouse button is single clicked over the filename, the set is highlighted. To highlight multiple sets, highlight one set then use the <SHIFT> key and <↑> or <↓> arrow keys accordingly. The right mouse button will bring up the floating menu shown in Figure 4. The following options are available:

- Check Selected – Checks all highlighted sets.
- UnCheck Selected – Unchecks all highlighted sets.
- Check All – Checks all sets.
- Check Red – Checks all odd numbered sets (for use in ML-1 Red/Blue Lock Analysis)
- Check Blue – Checks all even numbered sets (for use in ML-1 Red/Blue Lock Analysis)



- Set Break Point – Places a “Break Point” marker by the selected set. *g* will process up to the break point and pause.
- Clear Break Point – Clears the breakpoint.

When reprocessing data for the first time after collecting data and reopening a project, it is best to process all sets in the project, then go back and delete unwanted sets. The Process | Quick Update option from the main menu can be used to quickly recalculate the mean project gravity value and update the set views if no parameters are changed. If any processing parameters are changed, *g* automatically recalculates gravity for the entire data set.

Reviewing Processing Parameters

Processing parameters may be reviewed and/or modified in the Process | Setup screen shown in Figure 12 (the user may also press the F3 key to vie the Setup screen). Listed below are the Setup parameters that may be altered before reprocessing old data.

Figure 12. Process | Setup Dialog Box.

- Information – This menu is concerned with where the instrument is located. The user can enter Site Name, Site Code, Latitude, Longitude, Elevation, Nominal Pressure, Gravity Gradient, Transfer Height, Measured Setup Height, Barometric Factor, Polar motion values.



- System – This menu allows the user to enter Instrument Type, Model Serial Number, Interferometer Type, Laser Type (and wavelengths if applicable), Seismometer data collection enabled (if applicable, FGL Series instruments only), Analog to Digital data acquisition card and setup, Serial Barometer setup. The Advanced parameters may also be changed.
- Acquisition – These parameters may not be changed in post-processing.
- Control – All parameters may be changed with the exception of the laser lock (WEO) or alternate (ML1) functions.
- Comments

Output File Status

After starting to reprocess data, *g* will prompt the user whether or not to overwrite the current existing Project and Set summary files. *g* creates two output ASCII text files by default, the Project Summary and Set Summary File. By default, the files are named *<project name>.project.txt* and *<project name>.set.txt*. In some cases, users will want to change the names of the output files to preserve prior processing results. For details of the ASCII output file structure and contents, see Appendix (2) – ASCII Output Files.

Let's select "No" and enter our own default base name, "goutput1". By default then, *g* will create two ASCII text files, *goutput1.project.txt* and *goutput1.set.txt*. After pressing the "OK" button, *g* will begin processing the data.

Selecting "Yes" would simply overwrite the *<project name>.project.txt* and *<project name>.set.txt* files.

Processing Status

With the default windows displayed, State, Drops, Sets and Fit Residuals, the user is able to quickly evaluate the status of data processing. In the figures below, we have set a break point at Set 3 to pause the processing. The screen in Figure 13 is captured immediately following the last processed drop of Set 2.



g7 Absolute Gravity Data Acquisition and Processing Software

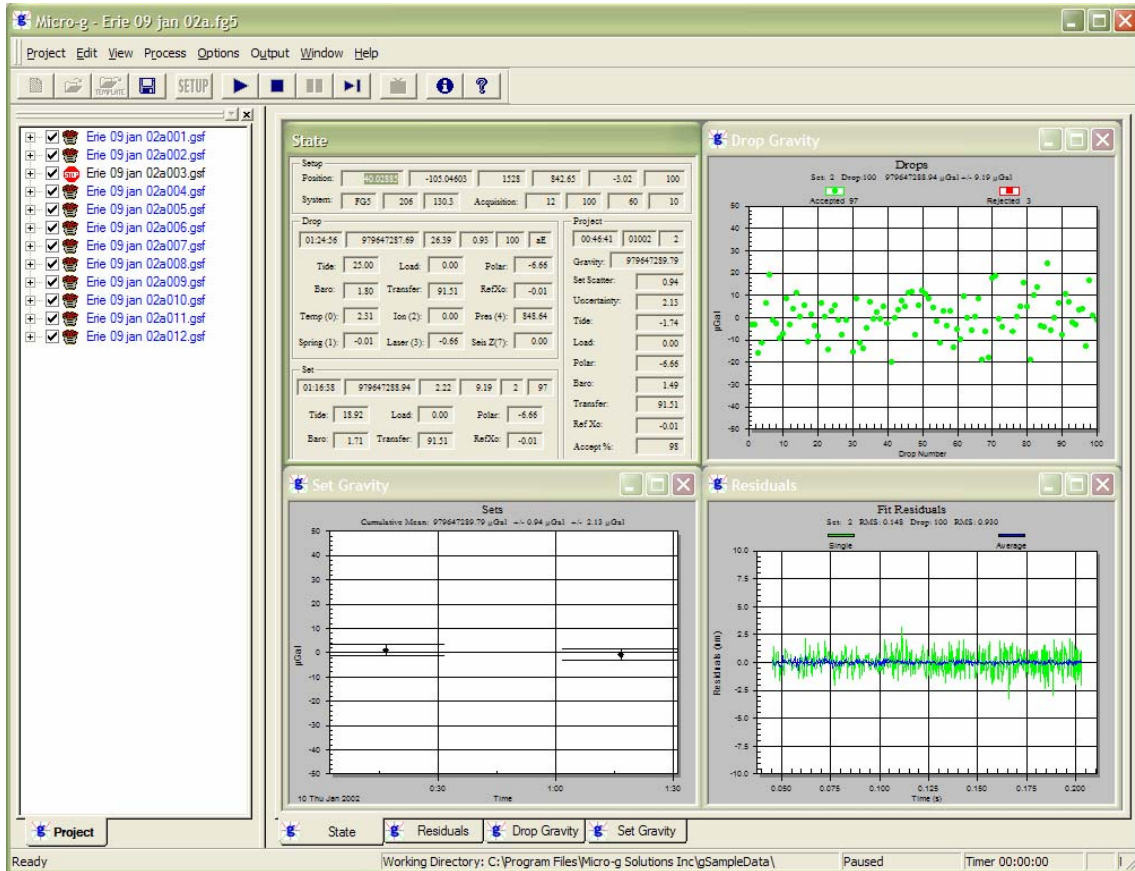


Figure 13. Processing Status after completion of Set #2.

The Sets window in the upper left hand corner of shows the two previously processed sets and their Uncertainty error bars. The two sets are plotted with the mean subtracted. The mean value is written above the graph.

The Fit Residuals window in the upper right hand corner of Figure 13 shows the average residual signal for Set 2 in blue and the single drop residual signal for Drop 100, Set 2 in green.

The Drops window in the lower right hand corner shows all the gravity values for Set 2 with the mean subtracted, while the State window in the lower left hand corner shows text information for Drop 100-Set 2, Set 2, and the cumulative average for the entire project.

Figure 14 is another look at the State Window (also shown above).

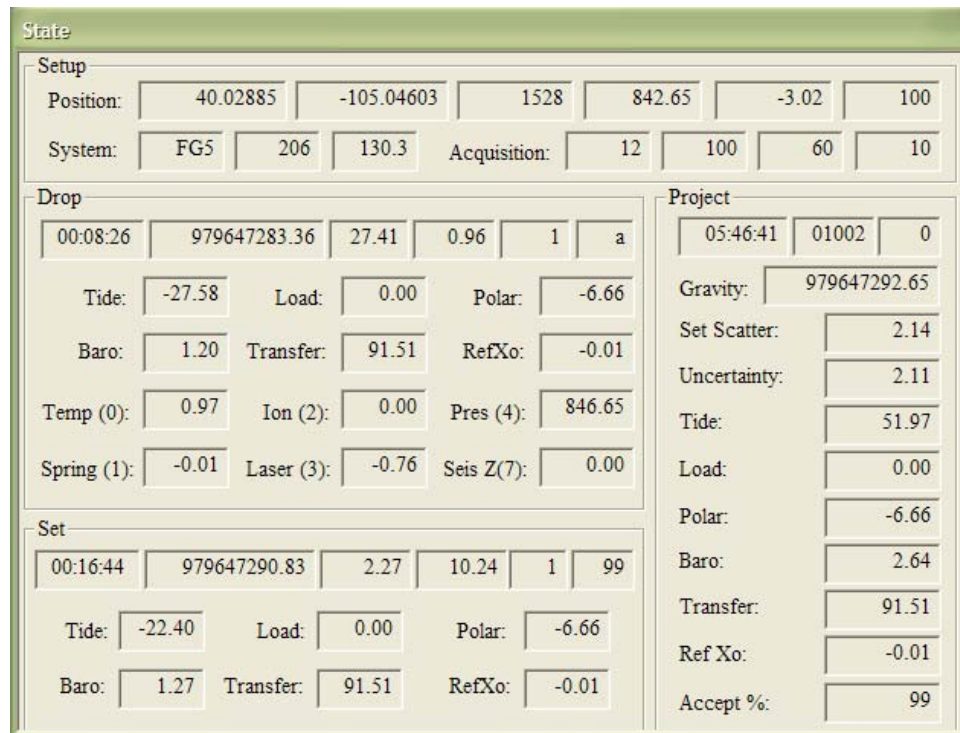


Figure 14. State Window

As previously mentioned, the State Window is always displayed and contains the most information of any of the twelve views. In Figure 14, basic project setup information is shown in the top window including the position (40.02885, -105.04603, 1528), nominal pressure (842.65), gradient (-3.02), the instrument type and serial number, (FG5 206) and the acquisition parameters (12 sets, 100 drop/set, 60 minute set intervals, 10 second drop intervals). In order to display information to the user and keep the view uncluttered, many of the boxes are not labeled. However, by “hovering” the mouse cursor over each box, a “tool tip” including units will appear with a description of the value.

The second box (Drop) contains information pertaining to the current drop being processed. In the case of Figure 14, the drop is 100. The time of the drop is displayed (01:24:56), the corrected absolute gravity value of the last drop (979647287.69), the standard deviation of the drop (26.39), the RMS of the drop fit (nm) (0.93), the drop number (100), whether or not the drop was accepted or rejected and the peak lock (“aE” implies accepted, E lock). The next six boxes show the corrections in μGal for tide (25.00), ocean loading (0.0), polar motion (-6.66), barometric (1.80), datum transfer (91.51), and reference Xo (0.01). The final six boxes show the current value of the sensor channels for ONLY the first six channels. All values are listed in Volts and correspond to the standard patch panel configuration on all Micro-g instruments.



The third box (Set) contains information pertaining to the current set being processed. In the case of Figure 14, it is Set 2. The average time of the accepted drops used to calculate the set mean is displayed (01:16:33), the average corrected gravity value (979647288.94), the uncertainty of the set in μGal (2.33), the drop to drop scatter in μGal (9.19), the set number (2) and the number of drops accepted (97). The next six boxes display the average value of the corrections applied in μGal : tide (18), ocean loading (0.00), polar motion (-6.66), barometric (1.71), datum transfer (91.51) and reference X_0 (0.01).

The final box (Project) contains information pertaining to the current state of the project through the last processed set (In this case, Set 2). The average time of the sets is shown (00:46:41), the day of the year and last two digits of the current year (01002 implies the tenth day of the year 2002), the number of sets processed (2), the average corrected gravity (979647289.79), the set to set scatter in μGal (0.94), the set uncertainty in μGal (2.13), and the average applied corrections in μGal .

Processing Finished

Processing is complete when the two “beeps” sound from the computer’s speaker (NOTE: the beeps do not sound from an installed sound card but ONLY the computer’s local speaker) and when the bottom message window indicates “Finished”

For our example, the final gravity value is $979647292.67\mu\text{Gal}$ with a set scatter of $\pm 2.26\mu\text{Gal}$ and a total uncertainty of $\pm 2.24\mu\text{Gal}$.

Reviewing Processing Results

Remember when we changed the output name to “goutput1”? If we use Windows Explorer to navigate to the gSampleData directory, we will see two new files, goutput1.project.txt and goutput1.set.txt. These files are ASCII text and can be opened with any text editor.

Project Summary File

The project summary file is designed to be a “snapshot” of the acquisition and data processing. It is intended to serve as the primary resource for archiving absolute gravity data. The project summary file is reproduced below in Figure 15. Explanations of each line are included in the figure, but are not normally part of the output file. The output data is divided into related sections, File creation and Header Information, Station Information, Instrument Data, Processing Results, Gravity Corrections, Uncertainties and Comments. Depending on the options selected (Laser, Tide Model, Ocean Loading), sections may include additional information.



```
Erie 09 Jan 02a.project.txt - Notepad
File Edit Format View Help
Micro-g Solutions g Processing Report
File Created: 02/13/07, 09:26:08

Project Name: Erie 09 Jan 02a
g Acquisition Version: 1.121700
g Processing Version: 7.070209

Company/Institution:
Operator: Kip

Station Data
Name: Micro-g Solutions Inc.
Site Code: WBSNU
Lat: 40.02885 Long: -105.04603 Elev: 1528.00 m
Setup Height: 14.00 cm
Transfer Height: 100.00 cm
Actual Height: 116.30 cm
Gradient: -3.020 µGal/cm
Nominal Air Pressure: 842.65 mbar
Barometric Admittance Factor: 0.30
Polar Motion Coord: -0.1829 " 0.3169 "
Earth Tide (ETGTAB) Selected
Potential Filename: C:\Program Files\Micro-g Solutions Inc\wavefiles\ETCPOT.dat
Delta Factor Filename: C:\gData\OceanLoad-Micro-g solutions Inc..dff
Delta Factors
Start Stop Amplitude Phase Term
0.000000 0.002427 1.000000 0.0000 DC
0.002428 0.249951 1.160000 0.0000 Long
0.711000 0.906312 1.142500 0.0000 O1
0.921941 0.974188 1.154240 0.0000 O1
0.989049 0.998028 1.149150 0.0000 P1
0.998853 1.216397 1.134890 0.0000 K1
1.719381 1.906462 1.161720 0.0000 N2
1.943766 1.976928 1.161720 0.0000 N2
1.994787 1.002885 1.161720 0.0000 S2
2.003032 1.182843 1.161720 0.0000 K2
2.753244 3.081253 1.07338 0.0000 W3
3.751864 3.817897 1.03900 0.0000 W4
Ocean Load ON, Filename: C:\gData\OceanLoad-Micro-g Solutions Inc..dff
Waves: M1 M2 O1 O2 O3 O4 O5 O6 O7 O8 O9 O10 O11 O12 O13 O14 O15 O16 O17 O18 O19 O20 O21 O22 O23 O24 O25 O26 O27 O28 O29 O30
Amplitude (µGal): 0.513 0.263 1.252 0.754 0.382 0.065 0.150 0.020 0.008 0.108
Phase (deg): 108.7 13.6 56.3 70.0 166.8 57.3 353.3 79.9 44.1 -123.7 -89.9

Instrument Data
Meter Type: FG5
Factory Height: 116.30 cm
Rubidium Frequency: 10000000.00000 Hz
Laser: WEO100 (asdf:tkj)
ID: 632.9911724 mm (-0.36 V)
IE: 632.99119473 mm (-0.73 V)
IF: 632.99121259 mm (-1.02 V)
IG: 632.99123023 mm (-1.30 V)
IH: 632.99136890 mm (-1.43 V)
II: 632.99139822 mm (-1.20 V)
IJ: 632.99142704 mm (-0.90 V)
Modulation Frequency: 8333.420 Hz

Processing Results
Date: 01/10/02
Time: 05:46:41
DOY: 010
Year: 2002
Time Offset (g h:m:s): 0 0 0:0
Gravity: 97964732.54 µGal
Set Scatter: 1.11 µGal
Measurement Precision: 0.32 µGal
Total Uncertainty: 2.05 µGal
Number of Sets Collected: 12
Number of Sets Processed: 12
Set #s Processed: 1,2,3,4,5,6,7,8,9,10,11,12
Number of Sets NOT Processed: 0
Set #s NOT Processed:
Number of Drops/Set: 100
Total Drops Accepted: 1193
Total Drops Rejected: 7
Total Fringes Acquired: 700
Fringe Start: 30
Processed Fringes: 600
GuideCard Multiplier: 4
GuideCard Scale Factor: 250

Acquisition Settings
Set Interval: 60 min
Drop Interval: 10 sec
Number of Sets: 12
Number of Drops: 100

Gravity Corrections
Earth Tide (ETGTAB): 51.38 µGal
Ocean Load: 0.52 µGal
Polar Motion: -6.66 µGal
Barometric Pressure: 2.64 µGal
Transfer Height: 21.51 µGal
Reference Xo: -0.01 µGal

Uncertainties
Sigma Reflect: 3.00
Earth Tide Factor: 0.001
Average Earth Tide Uncertainty: 0.05 µGal
Ocean Load Factor: 0.10
Average Ocean Load Uncertainty: 0.05 µGal
Barometric: 1.00 µGal
Polar Motion: 0.05 µGal
Laser: 0.01 µGal
Clock: 0.50 µGal
System Type: 0.00 µGal
Tidal Shift: 0.00 µGal
Water Table: 0.00 µGal
Unmodeled: 0.00 µGal
System Setup: 1.00 µGal
Gradient: 0.91 µGal (0.03 µGal/cm)

Comments
test run
```

Figure 15. "project.txt" Output Summary File.

Set Summary File

The set summary file contained in goutput1.set.txt contains set by set information including Set Number, Time, Day of Year, Year, Gravity, Set Standard Deviation, Set measurement precision, Set uncertainty, tide correction, barometric correction, polar motion correction, datum transfer correction, reference Xo correction, temperature,



g7 Absolute Gravity Data Acquisition and Processing Software

pressure, auxiliary channels and number of drops accepted and number of drops rejected. The file is tab delineated and is easily imported into most spreadsheet programs.



Tide Correction Models

g software accommodates two Tide Correction methods, ETGTAB and Berger. Within each it is possible to incorporate an Ocean Loading model. Most users should use the modern ETGTAB routine, but the Berger model is provided for completeness. The amplitude and the phase of the gravity loading are computed using the Farrell's method. The Green's functions for the PREM model are used and a correction for the mass conservation is included. The users may choose different ocean tides models. Details of the choices and options are discussed below.

Berger

In the Berger correction, the tidal parameters are set using a constant delta factor of 1.1554 and a phase Kappa of zero. This delta factor cannot be modified except for the DC term (Honkasalo correction). The tidal potential is also set once for all.

The gravity body tide is computed and applied to the observations (each drop). The program used for this computation was originally written by Jon Berger, November 1969, and was modified by J. C. Harrison, Judah Levine, and Karen Young, University of Colorado; Duncan Agnew, University of California San Diego (IGPP); and Glenn Sasagawa, NOAA.

ETGTAB

If ETGTAB is selected from the drop down list box, the Setup button leads to the menu shown in Figure 16. The Setup dialog has three separate sections. For more advanced information you can contact Olivier Francis at (Olivier@ecgs.lu).

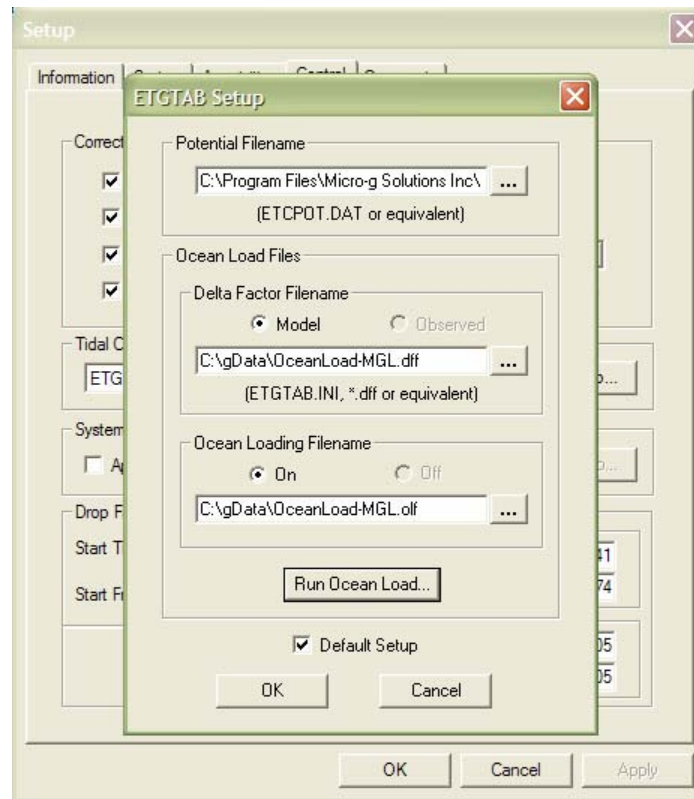


Figure 16. ETGTAB Setup Dialog Box.

Potential Filename

The first section allows the user to enter the Tidal Generating Potential File. For most users this file is called ETCPOT.dat and is located in the gWavefiles directory. The default file contains Tamura’s potential

Tidal Parameters Filename

This file can be supplied by the user, or generated on the fly as discussed earlier. The format of the file is shown in Figure 17. The default setup for g, enabled by checking the “Default “ box, is for a “dff” file generated by the Oceanload (Model). This setup does NOT contain any ocean loading component⁴. If the user has a compatible model or observed tidal parameters for the gravity station, the “Default” button may be unchecked and, if applicable, the “Observed” radio button checked.

⁴ Phase Kappa is set to Zero

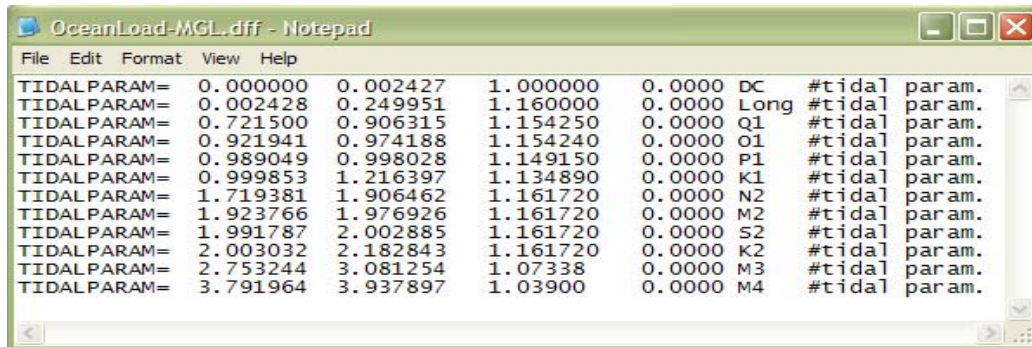


Figure 17. Example Delta Factor File Format.

NOTE: An “Observed” Gravimetric Delta and Kappa Factors File contain the Ocean Loading component and therefore the Oceanloading Filename option is disabled automatically.

OceanLoad

Previous versions of *g* came with a separate tool for calculating OceanLoading, but it is now built into the program. Two files are created by the OceanLoad tool:

- Delta Factor File – “Oceanload.dff”. This ASCII text file contains the listing of start frequency, end frequency, the Delta factor amplitude and phase (in degrees) in a format compatible with ETGTAB. This file can ONLY be used with the ETGTAB option.
- Ocean Loading File – “Oceanload.olf”. This ASCII text file contains the ocean load parameters (Wave, Amplitude and Local Phase listing). The file has an “olf” extension by default and can be used with Berger OR ETGTAB options.

It is recommended that the base name “Oceanload” be modified to something unique for the current instrument location. As of *g6*, the site name is automatically appended to the basename of “Oceanload”. For example, the Oceanload files for site TMGO are named “Oceanload-TMGO”. This helps avoid the situation in which the ocean load files for a different location are accidentally used in the calculation (resulting in the wrong gravity value!)

g will use the information from the “Information” page to get all the data that it needs to create the OceanLoading files. The values it uses are...

- Name – Site name for the *g* project file.
- Latitude – Latitude of the site.
- Longitude – Longitude of the site.
- Elevation – Mean Sea Level elevation for the site.



The ocean tide files are supplied to Micro-g by Dr. Olivier Francis, <http://www.ecgs.lu>.

Advanced Users

“Setup” allows the selection of three common ocean tide model for each term :

- Schwiderski
- FES2004
- CSR3.0

Users unfamiliar with these wave file models should accept the default values. Note that the FES2004 model is considered state of the art, but due to the high resolution of the model it can take a few minutes to calculate the ocean load. For quick setup purposes the default model is still that of Schwiderski.

g allows users to use already existing OceanLoad files or it can dynamically create the necessary files that the user specifies on the fly. To use existing files, enable OceanLoad by clicking the check box in the Setup option, and then search for the specified .olf and .dff files. Or, to dynamically create the files, enable OceanLoading, and then pick an base name for the OceanLoad files. Then, when *g* is run for the first time, it will ask to create the specified files.

Oceanloading Format

As discussed above, depending on the information (modeled versus observed) contained in the tidal parameters file, an Ocean Loading file may or may not be entered. The format of the Ocean Loading file is shown in Figure 18. Users may generate this file using the OceanLoad tool as explained above, or from their own data source.

Component	Amplitude	Phase
SM2	5.0998e-009	108.810
SS2	2.6316e-009	1.338e+001
SK1	1.2536e-008	56.382
SO1	7.5513e-009	70.083
SN2	4.3893e-010	167.756
SP1	3.8248e-009	57.360
SK2	6.4800e-010	352.920
SQ1	1.5014e-009	79.979
SMf	1.9891e-010	44.749
SMm	8.4001e-011	-124.612
sSsa	1.0427e-009	-8.988e+001

Figure 18. Example Ocean Load File Format.



g Binary Data Files Structure

g maintains a binary project file that contains all the station, system, acquisition, control and comments information used when occupying a absolute gravity station, as well as a list of all names of the set files. Project files have the project name as the prefix and end in a “fg5” extension. For example, the gSampleData directory contains a project called “Erie 09 jan 02a.fg5”.

Raw observation data for each set is stored in a binary gravity set file with a “gsf” extension. All raw data including time of drop, fringe times and auxiliary sensor(s) data is stored in this file. The files must be accompanied by the corresponding project file in order to be processed by the *g* software.

Set files are named sequentially based on the project file name, the number of the set, and the “gsf” extension. For example, in the gSampleData where the project name is “Erie 09 jan 02a.fg5”, the raw data file for the 5th set is named, “Erie 09 02a005.gsf”. The raw data file for the 12th set is named “Erie 09 02a012.gsf”.

Note. When transferring, sharing, or archiving *g* data, it is necessary to include the Project file (fg5) and ALL the set (gsf) files together. (The other files, *.txt, and project graphs, can be recreated by the software, and it is technically not necessary to archive those.)

For *g* Versions 6 at later, it is now possible to Import and Export all the project parameters and raw data in ASCII format. Please see the Section on “Additional Menu Options” for more information.



Additional Menu Options

Project

New

This option creates a new project file from scratch. All parameters are default and users must change the options according to their setup location, instrument and system, data acquisition parameters and control parameters. This includes the System Factory Height, Rubidium Clock Frequency, ML-1 Laser Wavelengths (for A10 and FGL instruments) as determined by Micro-g LaCoste, and the Laser Modulation frequency as determined by Winters Electro-Optics (WEO)

Open

This option opens an existing *FG5 file.

Close

This option close the current *FG5 file.

Save

This option saves the current *FG5 file

Save as Project

This option allows you to save a copy of the current *FG5 file to disk, marking the file as real time (as opposed to Post Mission). The current *FG5 file is closed and the copy is opened.

Save as Template

This option allows users to write a copy of the current project file to disk, marking the file as a *GTF. These files are usually not edited, and the user cannot acquire data with a *GTF file. *GTF files are meant to be used for creating new *FG5 files or other *GTF files.

Export

g employs it's own binary format when storing both the header (.fg5) and set gravity data (.gsf). For archiving and certain analysis purposes, g also allows the exporting and importing of ASCII data. Real time processing is still carried out using the g format, but in replay mode, and ASCII version of the data can be created by pressing Export. This creates two files that are editable with any plain text editor:

- <project name>.fg5.txt – this file contains all of the project Setup information: Information, System, Acquisition, Control, and Comments, as well as any processing information.



- <project name>.gsf.txt – this file contains all of raw gravity data for all of the sets: raw fringe times for every drop and the associated analog sensor data.

Import

To import ASCII I data (it must be in the format identical to that created by the Export function), you must first create a New Project. Then select Import, and you will be prompted to enter the <project name>.fg5.txt file name. **Note** that there must be a corresponding <project name>.gsf.txt file with the fringe data (again, in the correct format) which g will open automatically. The ASCII data are then converted to the standard g format for processing.

Edit

Reset

This option allows users to reset all or some of the project file parameters to the values at the time of original data acquisition.

Time Offset

This option allows application of a time shift in the event that the computer time was not set to the correct time. To calculate the offset, change the “True Start Time” to the correct time (the time that should have been) and then press “Calculate”. Check the time offset as listed in the grayed edit box. If the time offset is correct, check the Apply Time Offset option to make the time offset effective during processing.

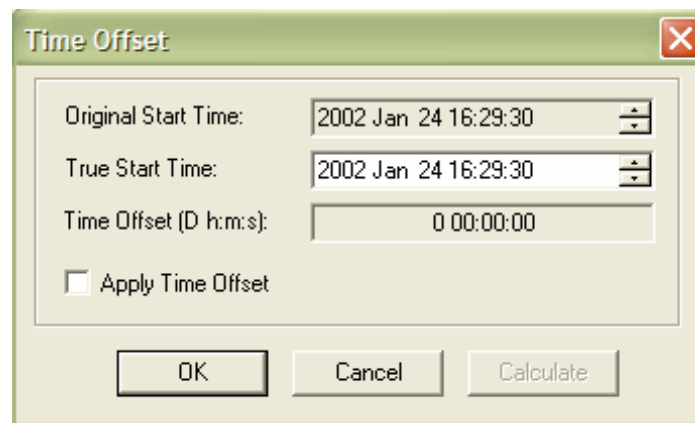


Figure 19. Project Time Offset Dialog Box.

Process

Rate

This option sets the rate at which drops are processed in Post-Mission mode only. On some machines with slower graphics, it may be necessary to set the rate to 50ms or



greater in order to avoid synchronization problems occurring between mathematical processing and graphical display.

Set Break Point

This option allows the manual setting of a break point in Post-Mission mode only. In general it is much easier to set a break point from the tree menu.

Go

This option starts the processing in both Post-Mission and Real-Time

Step

This option allows users to view process drops step by step in Post-Mission mode only.

Break

This option allows user to Pause processing and should only be used in Post-Mission mode.

Stop

This option stops all processing in Post-Mission processing or Real-time data acquisition.

Quick Update

This option is enabled after all sets have been processed. If a users wishes to discard Sets to be included in the final determination of the absolute value of gravity, after the sets are deselected on the tree, Quick Update will update the project number according to the last setup of processing parameters. If any processing parameters change, Quick Update automatically reprocess all selected sets.

View Channels

This option allows users to view data channels before and after processing. This is useful since users sometimes would like to know what data is coming in from channels with out having to process any of the data.

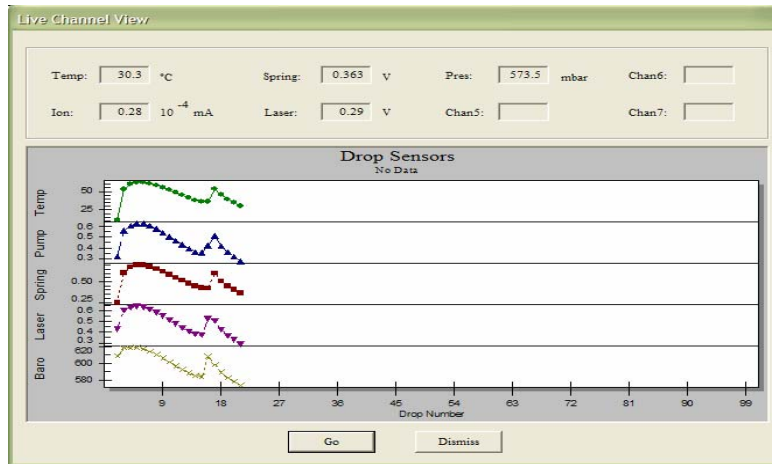


Figure 20. View Channels Live Update Window.

Options

Graphics. This option allows users to manually set all scales in the graphs. Graphical scales are saved to the project file. The user can also enable or disable “Data Review” mode. Data review, when enabled, allows users to click on a particular drop or set in the tree view, and view the last data that was stored. For Data Review mode to work properly, this option must be enabled before processing the data.

Email. For system controllers with an internet connection, g can be set up to send periodic emails with real time processing results. (Note that by default email notification is off). Figure 21 shows the Email Notification Dialog Box. The User must enter an email server, a valid identity for that server, and a valid recipient. Note that any errors encountered are suppressed to avoid interference with data acquisition. If enabled, the default information provided is

- Current total project gravity value
- Current set scatter
- Gravity value of the last completed set
- Drop scatter of the last completed set
- Total project uncertainty
- The number of the last completed set
- A copy of the latest version of the project.txt file
- A copy of the latest version of the set.txt file.

The notification can be set for never, after every completed set, after every other completed set, or only at the end of a completed project.

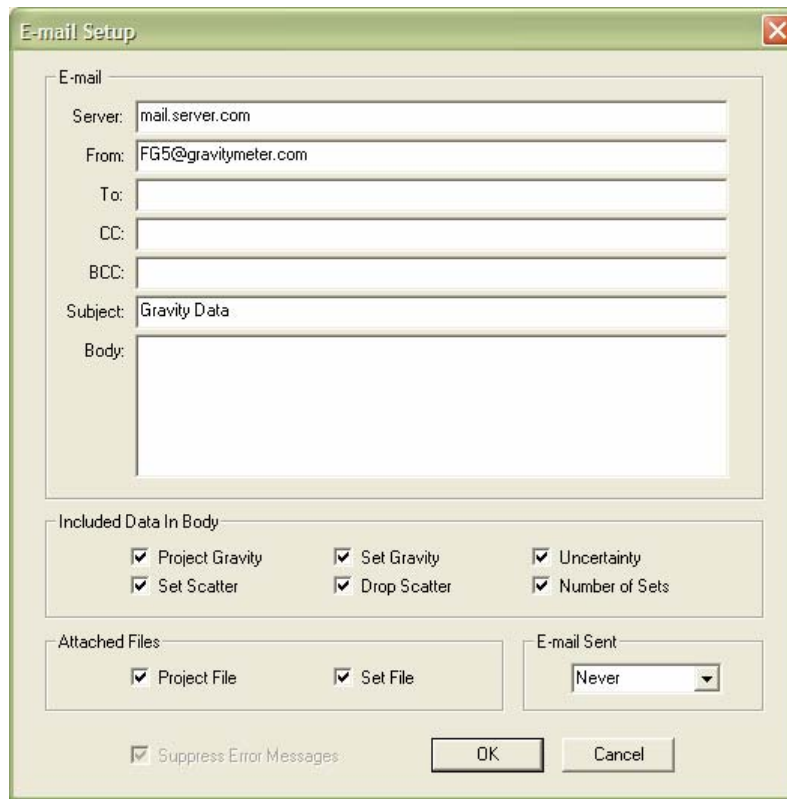


Figure 21. Email notification setup window.

Output

There are three options under Output, Text, Raw Dump, and Graphics. By default, *g* outputs a text file for Project Summary and Set by Set Summary. If users wish to have additional information output to file (Drops, Graphics (.jpg image of the displayed view), or Raw Data), these options must be selected before processing the data. Note: The view must be opened for *g* to save the graphical images.



Additional Utilities, “Convert”

Convert is the utility used for converting files obtained with Olivia DOS software into the new *g* format. Figure 22 shows the Convert menu.

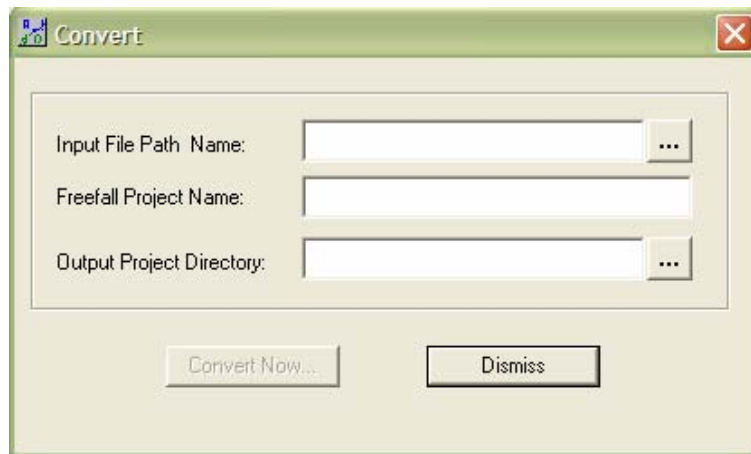


Figure 22. Convert Utility Dialog Box.

- Input File Path Name – This is the name of the DDT or compatible binary absolute gravity data file. *g* Convert supports most DDT files but may not support some versions. If you have trouble converting files, please contact MGS immediately.
- Freefall Project Name – This is the base name to be used with the *g* project file.
- Output Project Directory – This is the location at which all *g* converted files (FG5 and *.gsf) will reside.

Additional Utilities “gProjectMerge”

gProjectMerge is a program that lets users combine multiple projects into one single project file. This is useful in the case when data acquisition is interrupted and a single project is desired. **Note** that *gProjectMerge* assumes that all acquisition parameters are identical (i.e. perhaps a run was stopped after a few sets, and a new project was created and begun immediately). *gProjectMerge* is **not** intended to combine projects with different parameters – if doing so, it is at your own risk!. Figure 23 shows the *gProjectMerge* interface.

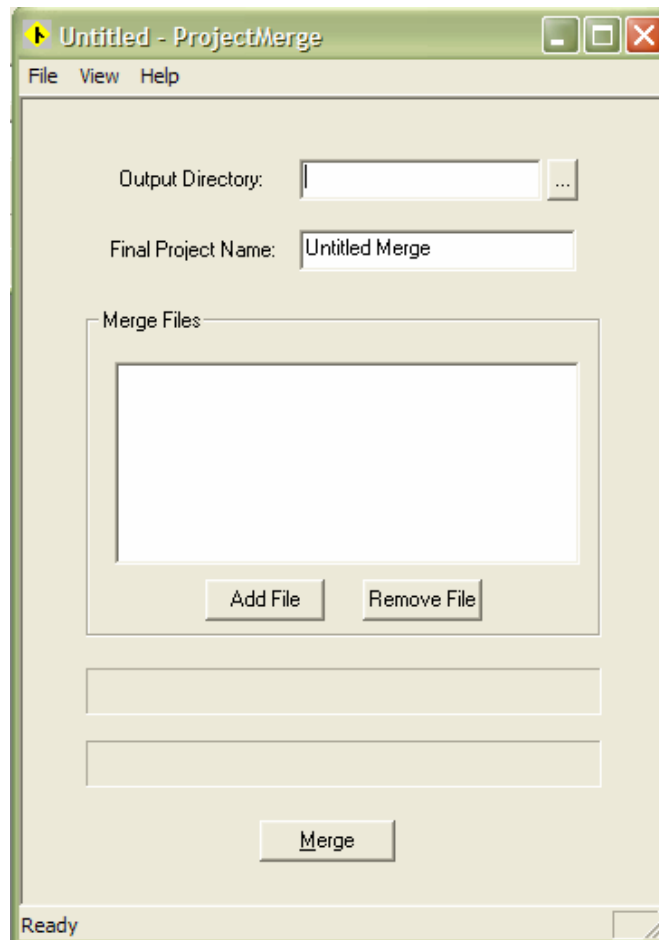


Figure 23. Project Merge Dialog Box.

- Output Directory – This is the location where the merged project will reside.
- Final Project Name – This is the name which the merged project will be saved as.
- Merge Files – These are the files that will be merged together to create the merged project.
- Add File Button – This button is for adding more files to the “Merge Files” list.
- Remove File Button – This button is for removing files from the “Merge Files” list. This button will remove the selected item. If no items are selected it will remove the first item.
- Merge Button – This button is used to start merging the file.

Additional Utilities “gProjectCopy”

gProjectCopy is a program that lets users easily change the name of their projects. This is useful if the user entered the wrong name for a project and needs to change it later. Figure 24 shows gProjectCopy.

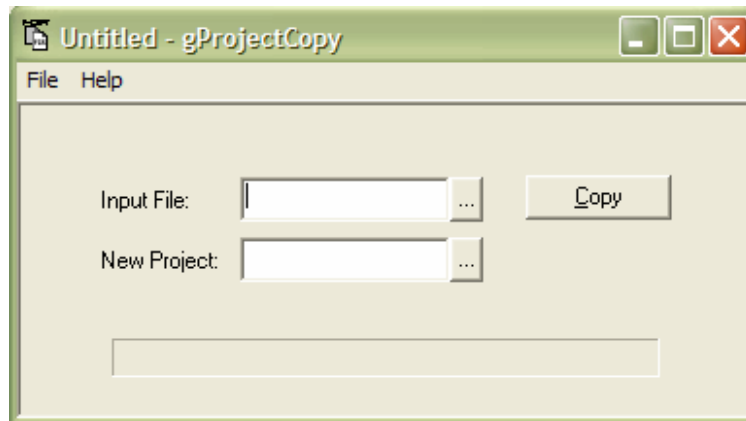


Figure 24. Project Copy Dialog Box.

- Input File – This is the file which the user wants to copy.
- New Project – This is the name of the output project name.
- Copy Button – This button starts the copying process.



License Information

Licensed users of *g* are entitled to three install platforms with the Main License. Additional installations, including support, are purchased one seat at a time directly from Micro-g. If your institution or company requires *g* to run on more than three platforms, please contact MGL directly or visit our website, www.microglacoste.com, for more information.

Support

Questions concerning the operation of *g* software and any problems using *g* should be directed to:

info@microglacoste.com

You can expect to receive an email or phone call within forty eight hours of your inquiry.

Maintenance

Periodically MGS will post an upgrade “patch” for *g* on the website. These patches will be posted without notification so please check back every few weeks to get the latest patch if applicable.